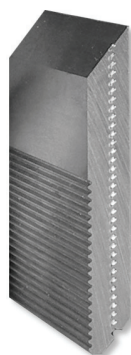
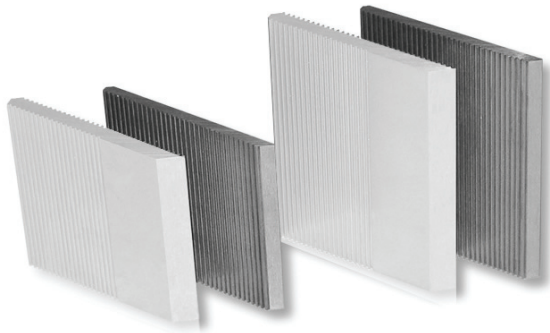

COLTELLI RIGATI SISTEMA DUPLEX
Corrugated knives Duplex System
Blanketts für System Duplex
Cuchillas corrugadas para Sistema Duplex

CODICE	MISURA (mm)	CODICE	MISURA (mm)
DSK404010	40x40x10	DSK406010	40x60x10
DSK504010	50x40x10	DSK506010	50x60x10
DSK604010	60x40x10	DSK606010	60x60x10
DSK804010	80x40x10	DSK806010	80x60x10
DSK1004010	100x40x10	DSK1006010	100x60x10
DSK1204010	120x40x10	DSK1206010	120x60x10
DSK1304010	130x40x10	DSK1306010	130x60x10
DSK1504010	150x40x10	DSK1506010	150x60x10
DSK1704010	170x40x10	DSK1706010	170x60x10
DSK1804010	180x40x10	DSK1806010	180x60x10
DSK2004010	200x40x10	DSK2006010	200x60x10
DSK2104010	210x40x10	DSK2106010	210x60x10
DSK2304010	230x40x10	DSK2306010	230x60x10
DSK3104010	310x40x10	DSK3106010	310x60x10
DSK3304010	330x40x10	DSK3306010	330x60x10
DSK405010	40x50x10		
DSK505010	50x50x10		
DSK605010	60x50x10		
DSK805010	80x50x10		
DSK1005010	100x50x10		
DSK1205010	120x50x10		
DSK1305010	130x50x10		
DSK1505010	150x50x10		
DSK1705010	170x50x10		
DSK1805010	180x50x10		
DSK2005010	200x50x10		
DSK2105010	210x50x10		
DSK2305010	230x50x10		
DSK3105010	310x50x10		
DSK3305010	330x50x10		




METALLO DURO SISTEMA DUPLEX
Carbide for Duplex System
Hart metall für System Duplex
Metal durox para Sistema Duplex

CODICE	MISURA (mm)	CODICE	MISURA (mm)
HM40383	40x38x3	HM40603	40x60x3
HM50383	50x38x3	HM50603	50x60x3
HM60383	60x38x3	HM60603	60x60x3
HM80383	80x38x3	HM80603	80x60x3
HM100383	100x38x3	HM100603	100x60x3
HM120383	120x38x3	HM120603	120x60x3
HM130383	130x38x3	HM130603	130x60x3
HM150383	150x38x3	HM150603	150x60x3
HM170383	170x38x3	HM170603	170x60x3
HM180383	180x38x3	HM180603	180x60x3
HM200383	200x38x3	HM200603	200x60x3
HM210383	210x38x3	HM210603	210x60x3
HM230383	230x38x3	HM230603	230x60x3
HM310383	310x38x3	HM310603	310x60x3
HM330383	330x38x3	HM330603	330x60x3
HM40503	40x50x3		
HM50503	50x50x3		
HM60503	60x50x3		
HM80503	80x50x3		
HM100503	100x50x3		
HM120503	120x50x3		
HM130503	130x50x3		
HM150503	150x50x3		
HM170503	170x50x3		
HM180503	180x50x3		
HM200503	200x50x3		
HM210503	210x50x3		
HM230503	230x50x3		
HM310503	310x50x3		
HM330503	330x50x3		